



# Footfall Monthly Performance

Monthly

Weekly

Daily

Hourly

Back to Summary

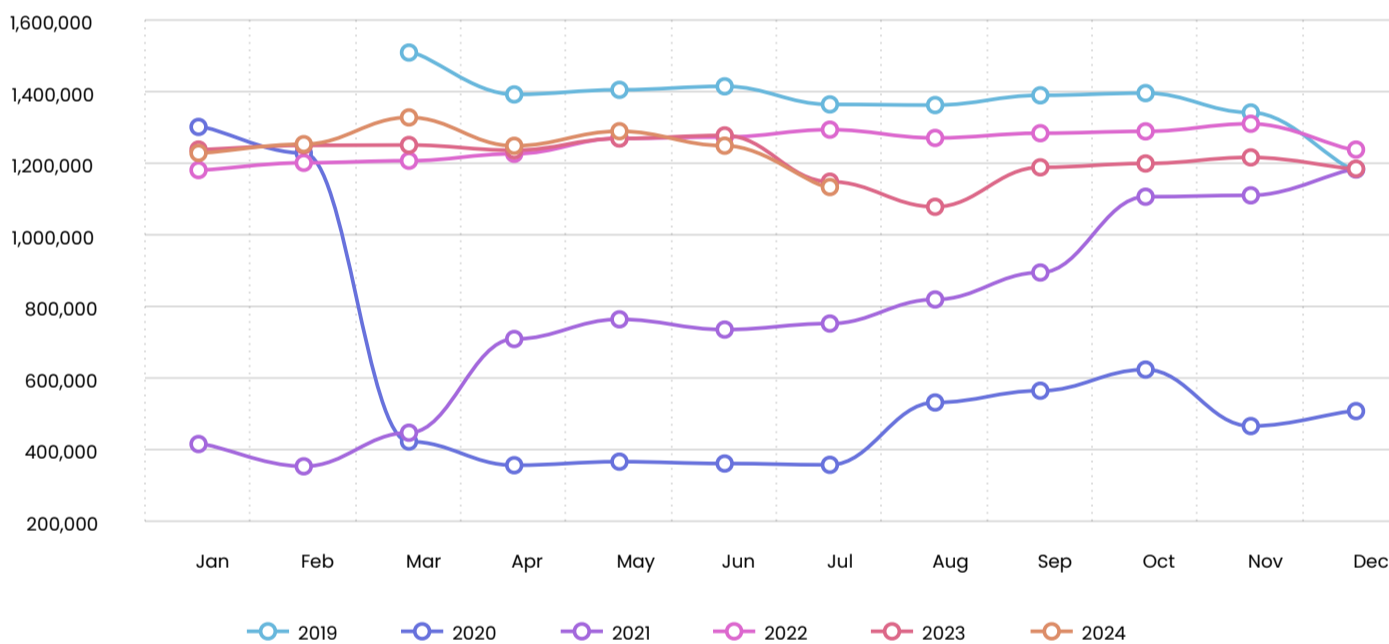
Streets

## Footfall Monthly by Month

Month	2019	2020	2021	2022	2023	2024
Jan		1,303,998	418,097	1,183,407	1,240,790	1,231,106
Feb		1,230,810	355,805	1,203,744	1,252,365	1,255,781
Mar	1,511,770	424,970	449,710	1,209,492	1,253,494	1,330,568
Apr	1,394,768	358,839	711,505	1,228,926	1,238,782	1,251,207
May	1,407,601	368,785	766,463	1,271,944	1,271,795	1,291,968
Jun	1,417,377	363,638	737,792	1,275,715	1,280,197	1,251,564
Jul	1,366,867	359,952	754,667	1,296,338	1,151,043	1,136,079
Aug	1,365,008	534,129	821,921	1,273,203	1,080,850	
Sep	1,392,299	567,019	897,237	1,286,454	1,191,114	
Oct	1,398,436	626,009	1,108,972	1,291,600	1,201,834	
Nov	1,344,329	468,220	1,112,847	1,312,821	1,218,909	
Dec	1,186,088	510,093	1,185,094	1,240,677	1,187,163	

Copy Excel CSV Print

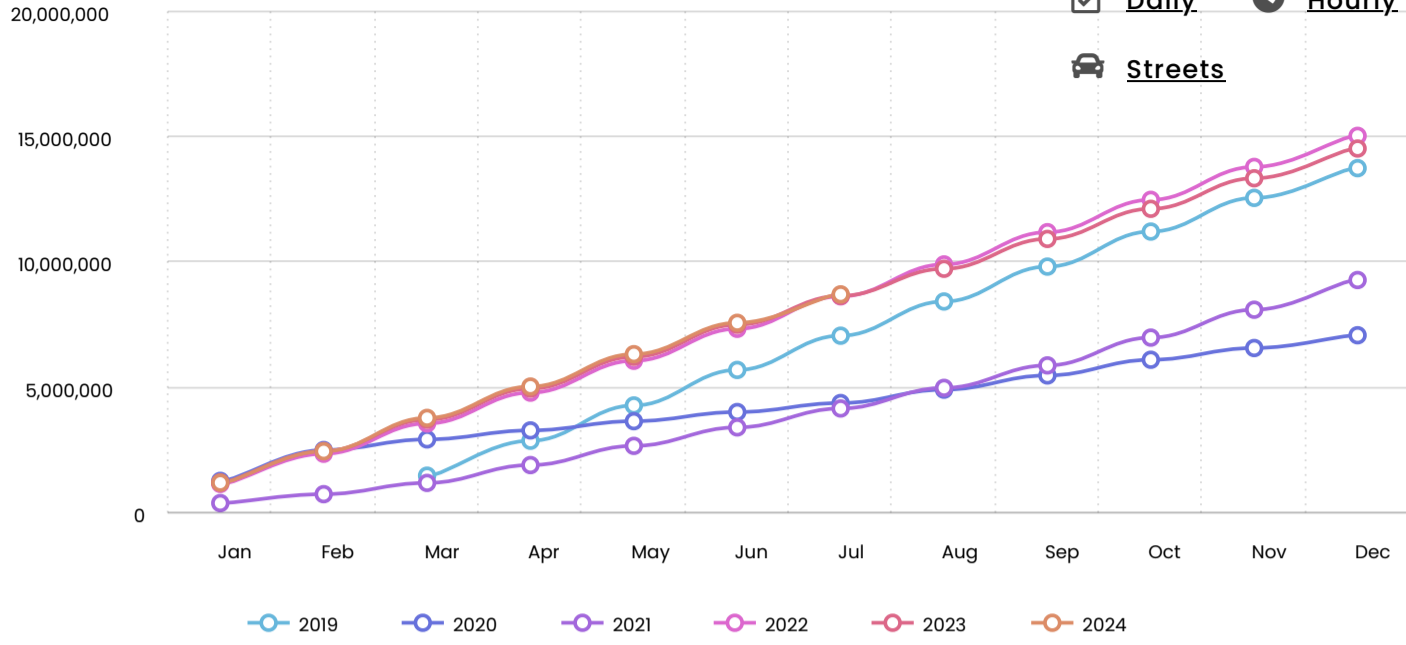
Footfall Volume



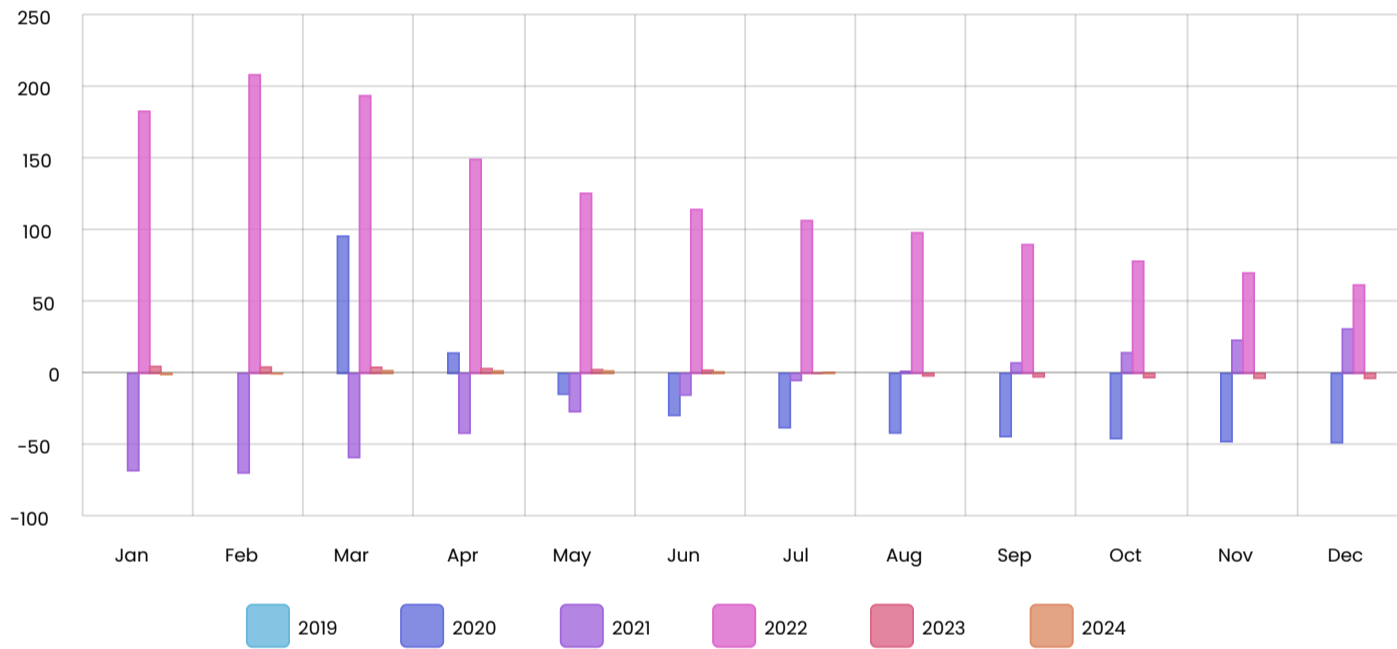
## Cumulative Year to Date

Month	2019	2020	2021	YoY	2022	YoY	2023	YoY	2024	YoY
Jan		1,303,998	418,097	-67.9%	1,183,407	+183.0%	1,240,790	+4.8%	1,231,106	-0.8%
Feb		2,534,808	773,902	-69.5%	2,387,151	+208.5%	2,493,155	+4.4%	2,486,887	-0.3%
Mar	1,511,770	2,959,778	1,223,612	-58.7%	3,596,643	+193.9%	3,746,649	+4.2%	3,817,455	+1.9%
Apr	2,906,538	3,318,617	1,935,117	-41.7%	4,825,569	+149.4%	4,985,431	+3.3%	5,068,662	+1.7%
May	4,314,139	3,687,402	2,701,580	-26.7%	6,097,513	+125.7%	6,257,226	+2.6%	6,360,630	+1.7%
Jun	5,731,516	4,051,040	3,439,372	-15.1%	7,373,228	+114.4%	7,537,423	+2.2%	7,612,194	+1.0%
Jul	7,098,383	4,410,992	4,194,039	-4.9%	8,669,566	+106.7%	8,688,466	+0.2%	8,748,273	+0.7%
Aug	8,463,391	4,945,121	5,015,960	+1.4%	9,942,769	+98.2%	9,769,316	-1.7%		
Sep	9,855,690	5,512,140	5,913,197	+7.3%	11,229,223	+89.9%	10,960,430	-2.4%		
Oct	11,254,126	6,138,149	7,022,169	+14.4%	12,520,823	+78.3%	12,162,264	-2.9%		
Nov	12,598,455	6,606,369	8,135,016	+23.1%	13,833,644	+70.1%	13,381,173	-3.3%		
Dec	13,784,543	7,116,462	9,320,110	+31.0%	15,074,321	+61.7%	14,568,336	-3.4%		

Copy Excel CSV Print



Year to Date Footfall % Change



Pre Covid vs Current Year

Location	Aug 23 v 19	Sep 23 v 19	Oct 23 v 19	Nov 23 v 19	Dec 23 v 19	Jan 24 v 20	Feb 24 v 20	Mar 24 v 19	Apr 24 v 19	May 24 v 19	Jun 24 v 19	Jul 24 v 19
Crawley	-20.8%	-14.4%	-14.1%	-9.3%	+0.1%	-5.6%	+2.0%	-12.0%	-10.3%	-8.2%	-11.7%	-16.9%
South East	-7.5%	-4.2%	-6.1%	+4.1%	+10.7%	-6.0%	-1.8%	-11.6%	-6.3%	-5.8%	-8.2%	-4.1%
UK	-8.7%	-4.7%	-7.2%	-0.1%	+7.0%	-7.5%	-2.4%	-11.9%	-5.8%	-4.2%	-5.5%	-3.7%

Copy Excel CSV Print

Regional and UK Benchmarking For Rolling 12 months

Location	Aug 23	Sep 23	Oct 23	Nov 23	Dec 23	Jan 24	Feb 24	Mar 24	Apr 24	May 24	Jun 24	Jul 24
Crawley	1,080,850	1,191,114	1,201,834	1,218,909	1,187,163	1,231,106	1,255,781	1,330,568	1,251,207	1,291,968	1,251,564	1,136,079
South East	88,107,703	91,505,053	89,020,840	88,293,287	85,378,212	87,703,177	86,871,782	88,814,913	88,850,790	90,115,610	90,027,417	91,846,252
UK	667,157,148	703,309,092	683,355,484	681,945,464	659,736,660	678,771,593	675,723,736	682,735,118	690,453,046	700,109,014	695,525,147	701,926,072

Copy Excel CSV Print



### Benchmarking: Footfall Volume

