



# Footfall Monthly Performance

Monthly Weekly

Daily Hourly

Back to Summary

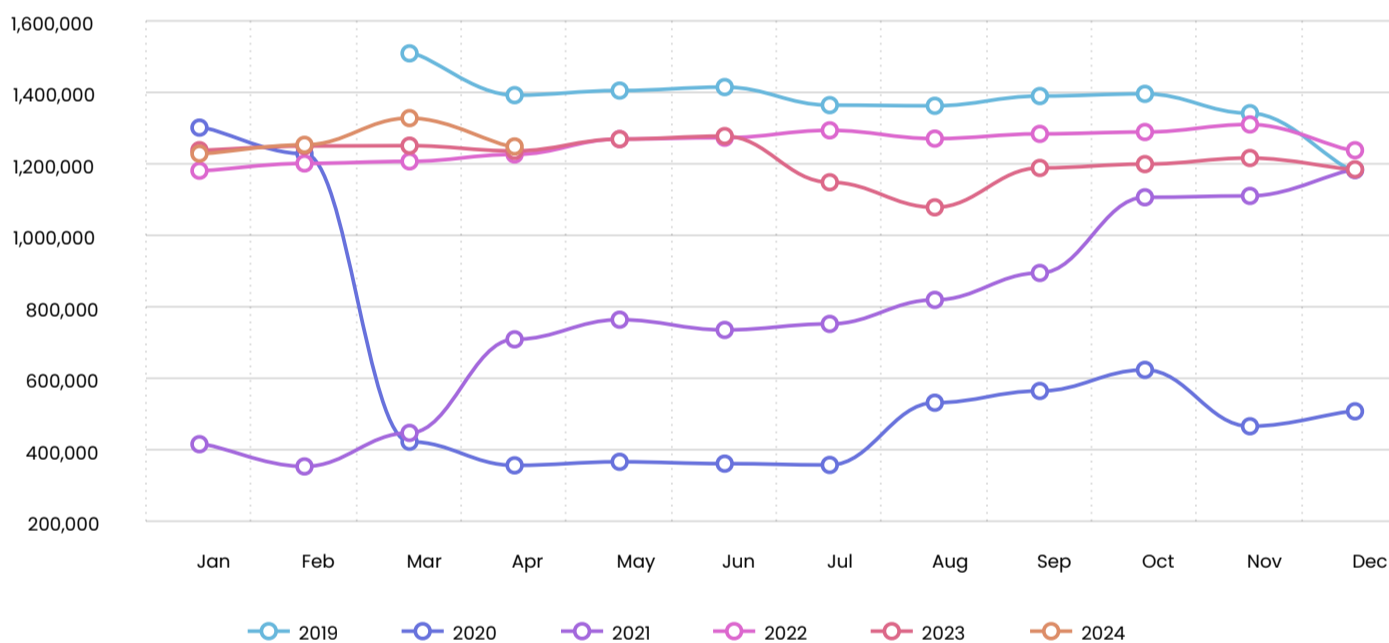
Streets

## Footfall Monthly by Month

Month	2019	2020	2021	2022	2023	2024
Jan		1,303,998	418,097	1,183,407	1,240,790	1,231,106
Feb		1,230,810	355,805	1,203,744	1,252,365	1,255,781
Mar	1,511,770	424,970	449,710	1,209,492	1,253,494	1,330,568
Apr	1,394,768	358,839	711,505	1,228,926	1,238,782	1,251,207
May	1,407,601	368,785	766,463	1,271,944	1,271,795	
Jun	1,417,377	363,638	737,792	1,275,715	1,280,197	
Jul	1,366,867	359,952	754,667	1,296,338	1,151,043	
Aug	1,365,008	534,129	821,921	1,273,203	1,080,850	
Sep	1,392,299	567,019	897,237	1,286,454	1,191,114	
Oct	1,398,436	626,009	1,108,972	1,291,600	1,201,834	
Nov	1,344,329	468,220	1,112,847	1,312,821	1,218,909	
Dec	1,186,088	510,093	1,185,094	1,240,677	1,187,163	

Copy Excel CSV Print

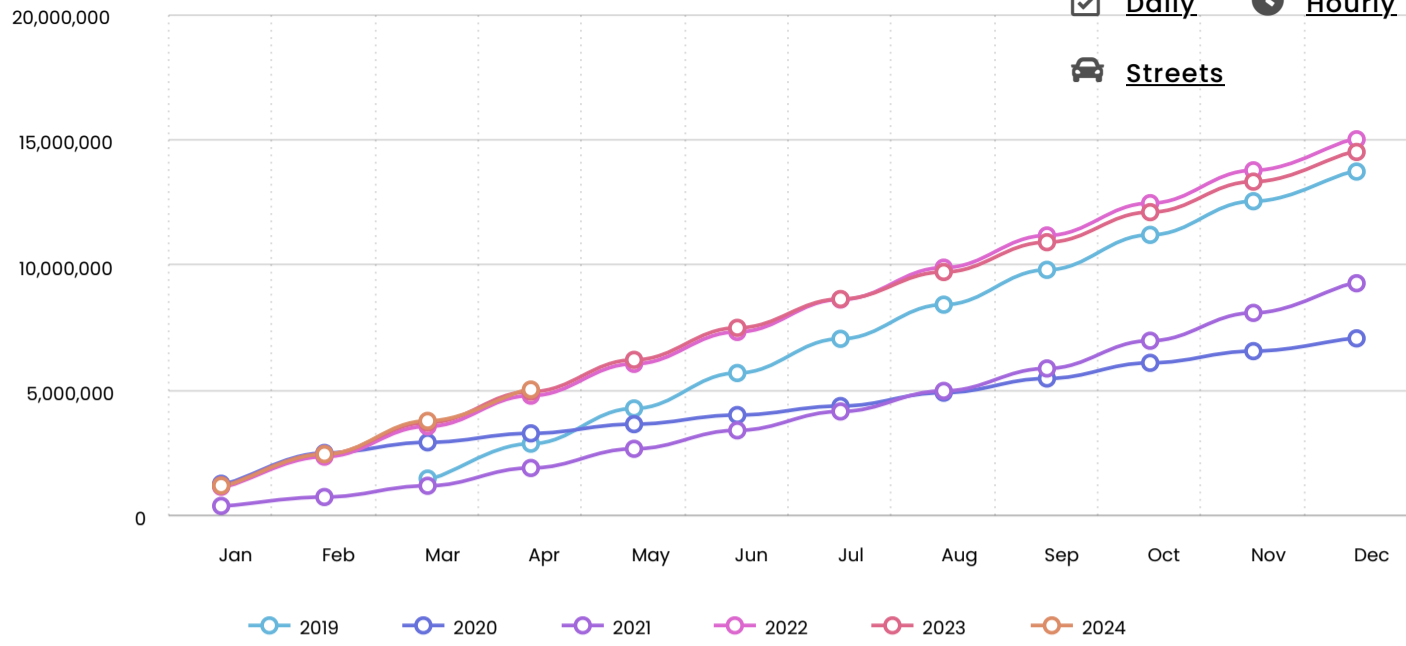
Footfall Volume



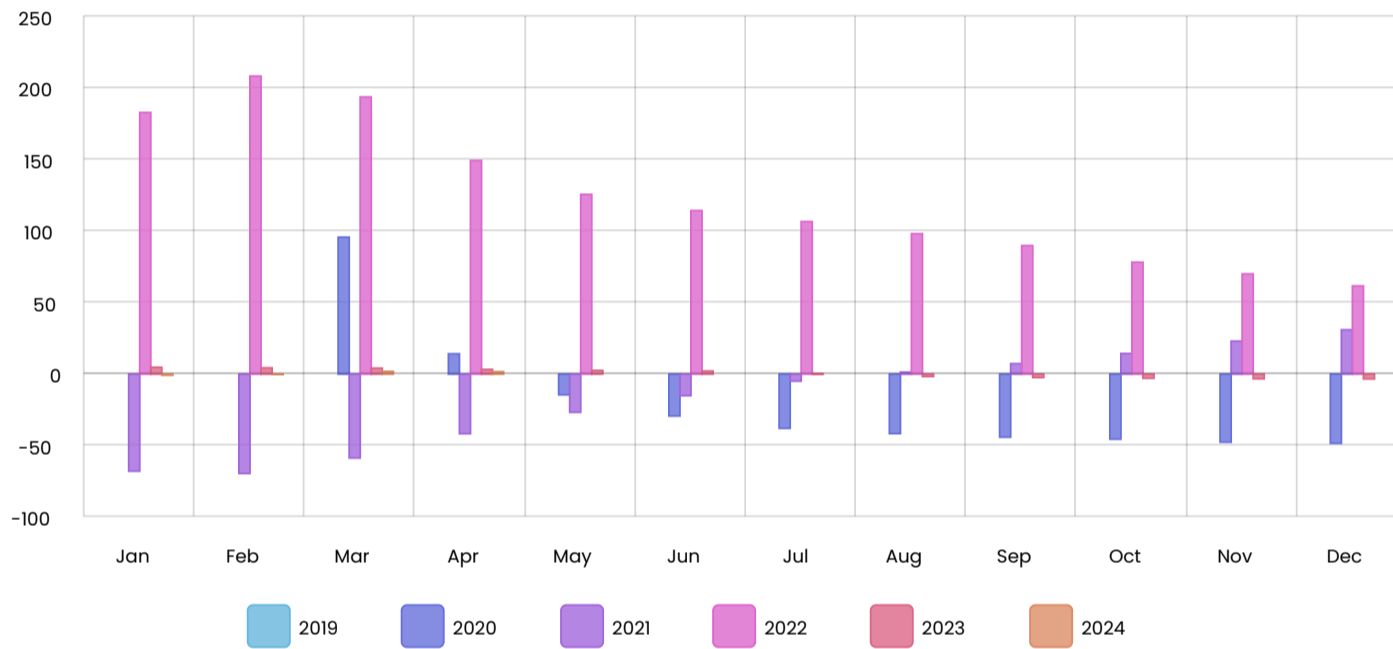
## Cumulative Year to Date

Month	2019	2020	2021	YoY	2022	YoY	2023	YoY	2024	YoY
Jan		1,303,998	418,097	-67.9%	1,183,407	+183.0%	1,240,790	+4.8%	1,231,106	-0.8%
Feb		2,534,808	773,902	-69.5%	2,387,151	+208.5%	2,493,155	+4.4%	2,486,887	-0.3%
Mar	1,511,770	2,959,778	1,223,612	-58.7%	3,596,643	+193.9%	3,746,649	+4.2%	3,817,455	+1.9%
Apr	2,906,538	3,318,617	1,935,117	-41.7%	4,825,569	+149.4%	4,985,431	+3.3%	5,068,662	+1.7%
May	4,314,139	3,687,402	2,701,580	-26.7%	6,097,513	+125.7%	6,257,226	+2.6%		
Jun	5,731,516	4,051,040	3,439,372	-15.1%	7,373,228	+114.4%	7,537,423	+2.2%		
Jul	7,098,383	4,410,992	4,194,039	-4.9%	8,669,566	+106.7%	8,688,466	+0.2%		
Aug	8,463,391	4,945,121	5,015,960	+1.4%	9,942,769	+98.2%	9,769,316	-1.7%		
Sep	9,855,690	5,512,140	5,913,197	+7.3%	11,229,223	+89.9%	10,960,430	-2.4%		
Oct	11,254,126	6,138,149	7,022,169	+14.4%	12,520,823	+78.3%	12,162,264	-2.9%		
Nov	12,598,455	6,606,369	8,135,016	+23.1%	13,833,644	+70.1%	13,381,173	-3.3%		
Dec	13,784,543	7,116,462	9,320,110	+31.0%	15,074,321	+61.7%	14,568,336	-3.4%		

Copy Excel CSV Print



Year to Date Footfall % Change



Pre Covid vs Current Year

Location	May 23 v 19	Jun 23 v 19	Jul 23 v 19	Aug 23 v 19	Sep 23 v 19	Oct 23 v 19	Nov 23 v 19	Dec 23 v 19	Jan 24 v 20	Feb 24 v 20	Mar 24 v 19	Apr 24 v 19
Crawley	-9.6%	-9.7%	-15.8%	-20.8%	-14.4%	-14.1%	-9.3%	+0.1%	-5.6%	+2.0%	-12.0%	-10.3%
South East	-3.3%	-5.8%	-5.6%	-7.5%	-4.2%	-6.1%	+4.1%	+10.7%	-6.0%	-1.8%	-11.6%	-6.3%
UK	-2.2%	-3.1%	-4.9%	-8.7%	-4.7%	-7.2%	-0.1%	+7.0%	-7.5%	-2.4%	-11.9%	-5.8%

Copy Excel CSV Print

Regional and UK Benchmarking For Rolling 12 months

Location	May 23	Jun 23	Jul 23	Aug 23	Sep 23	Oct 23	Nov 23	Dec 23	Jan 24	Feb 24	Mar 24	Apr 24
Crawley	1,271,795	1,280,197	1,151,043	1,080,850	1,191,114	1,201,834	1,218,909	1,187,163	1,231,106	1,255,781	1,330,568	1,251,207
South East	92,450,795	92,312,862	90,479,221	88,107,703	91,505,053	89,020,840	88,293,287	85,378,212	87,703,177	86,871,782	88,814,913	88,850,790
UK	715,030,977	713,336,123	693,080,699	667,157,148	703,309,092	683,355,484	681,945,464	659,736,660	678,771,593	675,723,736	682,735,118	690,453,046

Copy Excel CSV Print



Benchmarking: Footfall Volume

